



# Signals From The Point

Official Newsletter of the Caribbean Contesting Consortium  
Editor: W0CG

Volume 26, Number 1

January 15, 2026

## CQWW SSB 2025 Youth Team Video

I released the video on January 4.

<https://www.youtube.com/watch?v=ShbVLHYefos>

In the five days between then and this writing on the 9th it has had 531 views. I have received many very favorable comments from testers around the world about the production. My focus in this video was to feature the young operators rather than the contest itself.

The video makes it clear that contesting will NOT DIE with the demise of my generation. The future is bright because these operators have very high contesting interest and skills.

It's 69 minutes, longer than I would have liked, but the material was so good that I ended up including more of it than planned. There is considerable on-air audio and video that shows off the excellent skills of the youth operators in difficult and noisy pileup situations.

All of us in CCC can be very proud that we enabled this youth operation by providing the PJ2T station as well as other support for the contest. Special thanks to CCC members W3ACO and NA2U for large contributions to the costs of this epic experience for the youth. Double thanks to W3ACO for his political work in helping to secure a \$10,000 donation from NCDXF. Thanks also to VE4GV and K8PGJ for providing advice and help to the team based on their decades of contest operating experience. Pete had a bad cold for the duration, but toughed it out nonetheless, so an extra big thanks to him.

The video shows Signal Point, PJ2T, CCC, and these outstanding young operators in a very favorable light. I hope that this might help generate support for future such operations. The hope is that this video will get

very broad dissemination among a great many radio clubs, in high school and middle school classrooms around the world, and also broadly among new licensees. Viewers will get a chance to see what the fun looks and sounds like, and be motivated to get licensed, take up contesting, and possibly choose technical careers. In the process, our October 2025 youth operators will become "stars" that young new hams will want to meet and emulate. If even only a part of this becomes reality, the funds from all of the generous donors will have been impactful and well leveraged.

Please, as CCC members, do your best to get this video link to as many outlets as you can, not to aggrandize PJ2T, but to help preserve and grow the hobby.



L-R: K8LG, W7EY, EI5LA, DL3ON, N4ML, PC8M, KG5XR, VE4GV, KN2P, W4IPC, K8PGJ

## December 27 Stew Perry Contest Report

Congratulations to K8ND for an excellent outcome. The remote station continues to impress us with its capability in the hands of a skilled operator.

### Single Op HP

Call	OpMode	Remote	QSOs	Op Time	Score
ZF9CW(K5GO)			597	11:45	4,234
KP4AA			448	9.5	4,026
K1LZ(K3JO)		x	605	13:41	3,743
PJ2T(K8ND)		x	384	12	3,569
RW7K(@UA7K)		x	370	14	2,822
K1KI			605	14	2,576
LY4A	SO2R		431	14	2,365
N5RZ			480	10:45	2,325
G5W(G3BJ)			413	13	2,262
N2MF			565	12:17	2,160

### CCC Member N4ML Article in QST



New CCC member Max Freedman, N4ML, checking the project list during CQWW SSB, October, 2025.

See “Contesting with the Youth Overlay,” p. 66 of November *QST*. This is an extremely well-written piece by our newest CCC member Max Freedman, N4ML.

### Team Update on ARRL DX CW, February, 2026

ARRL DX CW is February 21-22, 2026. The team is VE3CX, WI9WI, W0CG, NF9V, K7TQ, AG3I, and N7WA. We will also have help from remote operators.

Dorothy will be on site, and we have the Moran pool house booked and paid for. CCC member W2APF, an

accomplished chef, has offered to do some meals for the team.

WI9WI and KA9DOC will arrive early and run the WPX RTTY contest the weekend before.

### ARRL DX SSB, March 2026 – the Team Is Ready

Here come the YLs! The ARRL SSB team is now fully staffed, although every contest is open to every CCC member. If you would like to come we will find an off-site sleeping space for you, no problem.

The team is N5BR, W0CG, AC7DC, KD0BTO, W2APF, W7JET, W7EVE, K0PZH, IV3FSG, and K8LG. Those last four operators are YLs. Dorothy will be there and we have the Moran pool house.

### Thanks W1FJ for Top-Ten A/B Switches

Please join me in thanking Al, W1FJ for two Top-Ten Devices A/B relay boxes. These things are no longer made, and we have lots of them in our antenna switching system. One of them failed in November, and others are sure to follow. They are not repairable. Al donated them and shipped them to my Ohio QTH. I’ll take them to the island in two weeks. These spares will give us some room to breathe when the next one fails.

You will recall that W1FJ was our VIP Guest of Honor in 2017, operating (and winning) CQWW CW exactly 50 years from his 1967 operation from the Coral Cliff Hotel. He has been very kind and generous in helping us to keep PJ2T on the air.

### CQ WPX SSB, March 28-29 2026

Plans at present are for DL8OBQ to lead a small on-site team, including N4RV and others. Remote operators will also participate. Those plans are still in flux and unconfirmed. I will update you when we know more.

Dorothy and I will be on site, and will depart on April 1 immediately after this contest. We do NOT have any off site lodging reserved. It will be a small team, all residing at Signal Point.

## **K8ND On Site in Curacao**

PJ2ND is at the station January 8 through the end of the month. He will operate the CQ 160 CW contest as a single op. (W8WTS let us know on January 14 that he would not be coming, but might operate remotely.) Thanks to Jeff for feeding the cats and watering planters during his visit.

## **PJ2T PCs Have All Been Acquired**

Dorothy and I will take five more PCs to the island on January 19. This will complete our planned acquisition of 11 machines that all run Windows 11. I configured these last five in Idaho over Christmas, and they now run Hamachi VPN, Anydesk, and N1MM+. They are all labeled and ready for installation or storage into spares.

One of these machines, a Dell 7050, has extra horsepower, 32 GB RAM and a 1 TB SSD drive. That computer will serve Station 1 because it is the heaviest user with the most diverse software including, gulp, FT8. We have also been fortunate to acquire a TOTALLY NEW, not refurbished, PC for the remote station. The logic was that the failure of that computer would be catastrophic if it happened when the station was unattended. Thus we spent some extra dollars to get a brand new machine in the hope that will improve our odds of reliable long term service. That machine is a 7020 with 16 GB RAM and a 477 GB solid state drive. The remote PC does not have complex duties, so less horsepower was needed. It took considerable time in Idaho to set up this new computer to support the remote station. We're still struggling to get through this kind of thing after the departure of KB7Q. Gene's work was absolutely invaluable to the club over a period of many years, and we're very grateful for all he did. We'll put the new remote machine into service sometime early this winter after on-site testing and validation.

The NetBIOS names of these five machines are PCs 62, 63, and 64. PC65 is the high end machine for Station 1. PC66 is the remote station computer. Acquisition and configuration of the PCs is complete!

## **CCC Financial Report**

Per Treasurer W8WTS the end of 2025 balance in the Station Support fund is \$8759.54. Revenue from several upcoming contests and from dues renewals in May and June will significantly bolster this amount.

## **Maintenance Work on Entry Gate, Slogging Along**

I have bought 95 five inch sanding pads, 65 grit, to continue the work on the front gate sanding. This is extremely labor intensive and consumes sanding discs hungrily. We will haul those and some new Makita backer discs to the island in a couple of weeks and then resume the prep for varnish. The inside part is done – we are now working on the street side. Fortunately this only needs to be done every seven years or so.

## **Varnish in Ocean Pavilion**

We will focus intensely in February and March on varnishing the inside ceiling of the Ocean Pavilion. As you know, we now have three gallons of very high quality spar varnish that I imported from Michigan. Dorothy and I will need to buy an 8 foot step ladder for this project. In the past I have stood on the very top of our six foot ladder to reach the highest part of that ceiling, but that was foolhardy and I'll do it more safely going forward.

## **The Winter Work Projects**

- Isolate the overheating problem with the HF-2500
- Determine parts needs for Titan III
- Totally rebuild the planter bed behind the West Bedroom, making it maintenance free with desert plants
- Rebuild the Europe 3 el 80 wire loops
- Install a sacrificial anode on the Europe tower as a test
- Assess the problem with the 6 meter beam
- Diagnose the T/R problem in the Titan 425
- Clean traps and replace trap caps on 12/17 yagi (See note below.)
- Varnish pavilion inside ceiling
- Complete varnish of front gate
- Replace bad soffits on northwest portion of the house roof
- Explore configuration of a multiplier position in the shack

Do we have any volunteers for any of these?

### **Maintenance Note on the WARC Beam**

The 12/17 meter antenna is a Cush-Craft A3WS that we bought new and installed in the early 2000s.



This antenna is extremely reliable, but it does now require maintenance. The caps on all four of the traps have failed in the extreme ultraviolet and fallen off, leaving the interior of the traps exposed to salt corrosion. It's necessary to remove these traps, disassemble and clean them, and install new trap caps, which we have on site.

The problem is that it is no longer safe to work on that antenna while standing on the tower. All three legs near the top are small gauge, and each is about half eaten through by corrosion. We have splints on those legs that keep everything stable, but no climber in his right mind would want to stand above that area of the splints.

We are hoping to find a man lift that will reach that 60 foot point. A one day rental would be sufficient to reach the antenna, remove the traps, do the work quickly on the ground, and then make the replacements. This will be expensive. I will make inquiries about the costs and availability of the equipment and let you know in the next newsletter.

If the work appears to be technically feasible we'll then seek approval from the officers and board for the expenditure.

### **Multiplier Chasing at PJ2T**

We have been well aware for years of our deficiency in chasing multipliers with second-station capability. One approach would be to set up Station 4 (the 80 Meter station) to chase high band multipliers during the daylight hours when 80 is dead. Mirroring that idea,

we might set up Station 2 to chase low band multipliers at night when 15 is dead.

The 80 station would be able to select any of our tribanders using the "Tribanders Direct" switching capability. The 15 station would be able to select the 40 inv vee or one of the unused 80 antennas.

Obviously this would require trickery with front end protectors, possibly extremely narrow filters, and other techniques that are commonly used by monster stations such as K3LR that have a mult position at every single band. We do not have the capability to add fully dedicated, elegant multiplier stations, but probably some workaround variation on "borrowing" Stations 4 and 2 might be possible to engineer.

I don't really know what I'm doing in this technical arena, and we need to protect our K3 front ends, so I would welcome any technical inputs you might have. N7IR might be willing to advise us, although he has stepped away from CCC membership. Can someone advise? Thanks!

### **Photo Collage from Last Fall's CQWW SSB and CW Contests**



SSB testers are all wet.



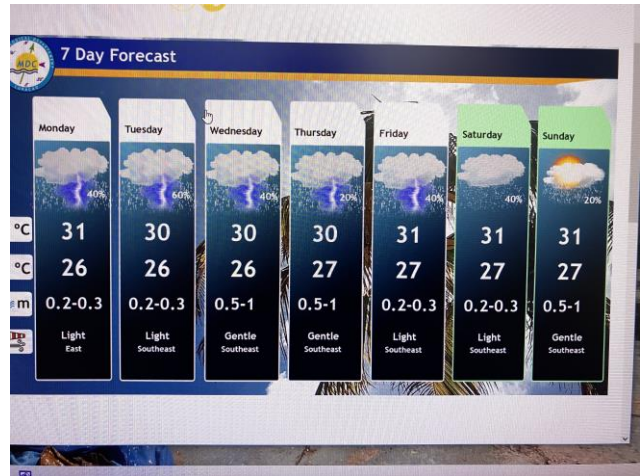
Prices of everything in Curacao are now expressed in “CG” (Caribbean Guilders). I’m honored.



New monitor donated by K8PGJ. You can actually read this one. Thanks Pete!



CCC President AG3I clearing vegetation from the Ridge 80 inverted vee, mid-October. It is unimaginably hot.



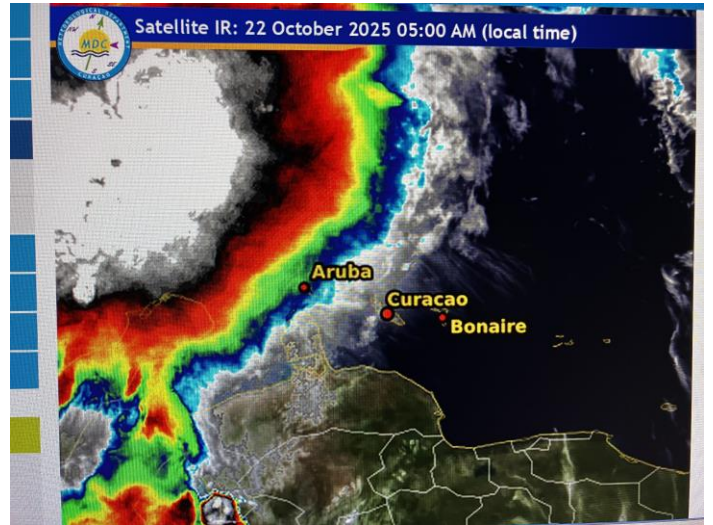
The lousy weather forecast for the week of WW SSB.



Soaked backyard, home to mosquitoes, after almost three inches of overnight rain just before the SSB team arrived.



My workspace rebuilding the Ridge tribander 20 meter driven element during a massive downpour of rain.



Hurricane Melissa formed soon after this system tracked northwest alongside Curacao. Too close.



New Ring camera above sliding doors that provides continuous surveillance of the generator.



Megan Lorenz, EI5LA, made the most QSOs in WW SSB. She's 18 and also does high speed CW.



Thanksgiving dinner, CQWW CW

